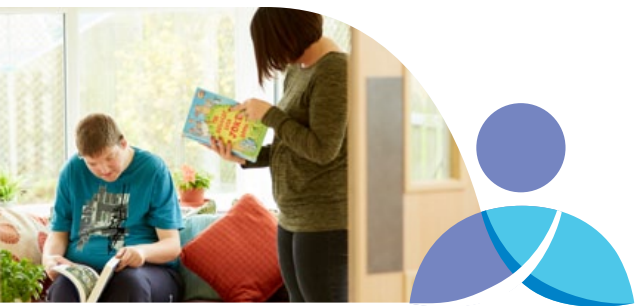




# Healthlinc Apartments

Specialist Community Based Service



## An Overview of Healthlinc Apartments

Healthlinc Apartments form a key part of our pathway of learning disability services in Lincolnshire, which includes Healthlinc House treatment and rehabilitation apartment based service and a community step down service, The Cottage.

The Apartments provide nursing and care services for adults with a learning disability and/or autistic spectrum disorder and complex conditions such as mental health problems, challenging behaviour, personality disorder and autism.

**We offer three levels of service at The Apartments for those individuals who:**

- Are currently living in the community who due to crisis require a period of person centred intensive care and support in a community based service
- Want to avoid hospital admission but have a high support need requiring a structured environment and intensive care and support
- Are currently or have previously been in hospital and require further support to progress to a more independent living setting



## Specialist service for individuals with learning disability

The Apartments provide a homely and spacious environment that replicates domestic living to encourage individuals to be responsible for maintaining their own living space and to support the development of daily living skills. The service is staffed 24 hours a day by the Registered Manager, a dedicated team of registered nurses and support workers.

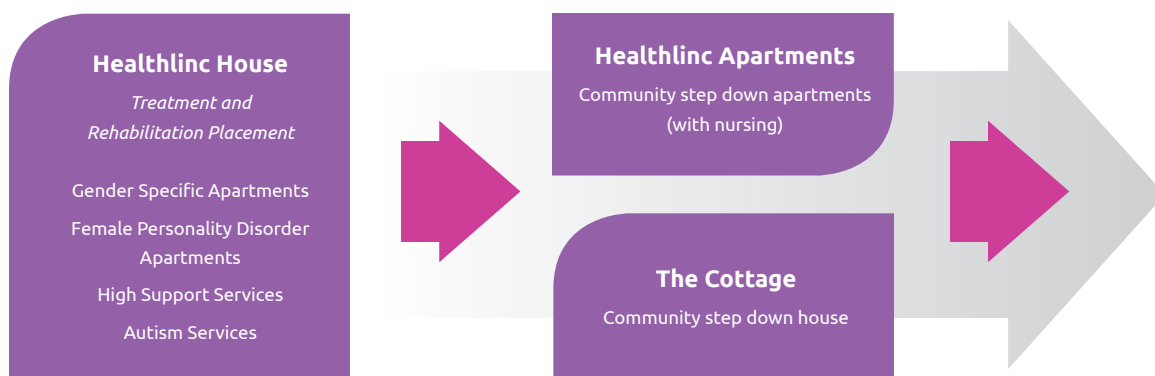
Set within its own grounds in a quiet residential area the apartments have six ensuite bedrooms and two communal lounges with patio doors opening out onto the rear gardens, a kitchen and bright and airy dining room. Outside there are private rear gardens and patio areas with seating. There is also a bespoke single person apartment.

As part of the Healthlinc Pathway of services the Apartments benefit from the availability and support of a full multidisciplinary team should this be required, during times of crisis.





## Healthlinc House Learning Disability Pathway



### Person Centred care incorporates the following elements:

- Individually tailored recovery and rehabilitation support
- Care delivered and reviewed following My Plan
- Positive risk taking
- Strengths based approach
- Positive behaviour management strategies
- Access to meaningful and stimulating activity seven days a week
- Developing independent living skills and community engagement
- A strong emphasis on safeguarding
- Robust clinical governance
- Access to independent advocacy
- Access to independent advocacy
- Strong multiagency and family partnerships to ensure a holistic package of care and pathway

### Service Outcomes

Healthlinc Apartments aim to deliver the following outcomes:

- Improvements in quality of life though living a meaningful life
- Greater choice, control and independence
- Social inclusion through active community engagement
- Effective management of behaviour
- Reduction of risk
- Good physical health
- Improved self-esteem and self worth
- Dignity and respect
- Successful transition into a supported living if appropriate



## About Elysium Learning Disabilities and Autism

Elysium offers a range of specialist services to people with learning disabilities, autism and complex needs such as mental health problems and personality disorders. We offer a pathway of integrated care through our individually tailored hospital placements, with a commitment to minimised length of stay and our specialist move on community services, providing person centred enablement and support.

All our services are specifically designed to provide small group or single person environments, replicating an ordinary living setting. These allow for the development of daily living skills aimed at a move towards more independent living.

Our services offer person centred and care planned outcomes focused interventions to support recovery to better health and greater independence. We facilitate engagement in the community and the opportunity to develop new lifestyle choices to improve self-esteem and confidence and ensure people are living meaningful lives.

Our ethos is built upon a shared belief that the person is central to everything we do and we ensure we are responsive to service users changing needs, reviewing and revising plans to meet these needs. We value positive risk taking opportunities within a context of robust risk assessment and management to ensure those we support are kept safe.

Each of our services are staffed by an experienced team of professional managers, support workers,

and nurses. Each service has in place or access to psychiatrists, psychologists and assistants, occupational therapists, speech and language therapists and advocacy.

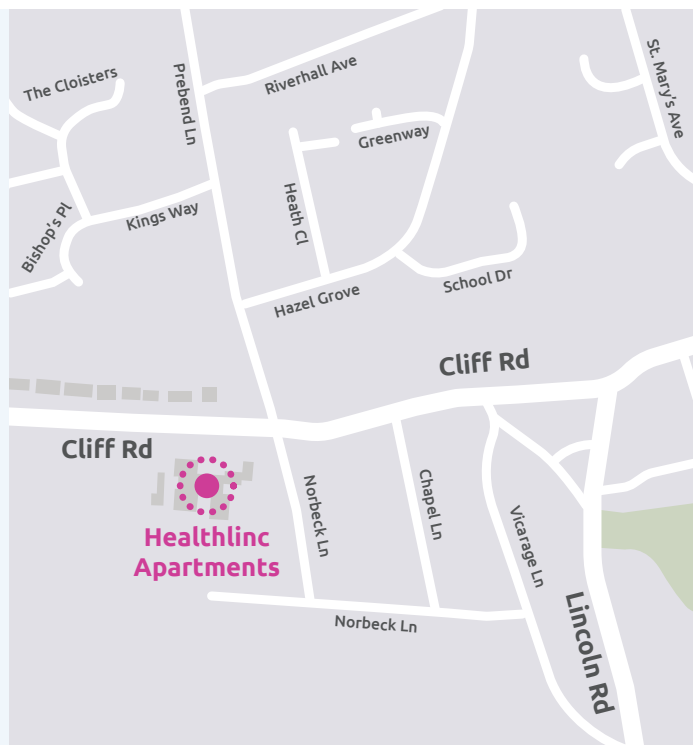
Our services are well-led by caring, professional and experienced staff and our senior management team is always close to the patients and service users, staff teams and service managers, so our care is developed in direct response to people's needs. We measure the effectiveness of our interventions using a range of validated tools and by listening to and acting on feedback from the people we support, their carers and case managers and commissioners. We are committed to the continuous improvement of service delivery and providing services which meet changing demand.

To discuss Healthline Apartments in more detail, arrange a visit or make a referral please call our 24 hour Referral Line **0800 218 2398** or email [referrals@elysiumhealthcare.co.uk](mailto:referrals@elysiumhealthcare.co.uk)



## Our Locations

Bradley Apartments  
Chesterfield House  
The Cottage  
Healthlinc Apartments  
Healthlinc House  
The Woodhouse  
The Woodlands



## About Healthlinc Apartments

Healthlinc Apartments is part of a learning disability pathway of services for men and women, located in Welton, Lincolnshire.

The village of Welton has a number of local amenities, such as shops, cafes, library and church and is a relaxed local environment that provides an ideal setting for individuals to move towards greater independence and engage in a meaningful way in the community.

Welton is situated within 20 minutes' drive of Lincoln city centre and around one hour's drive away from Nottingham, Doncaster and Hull.

## Contact details:

Healthlinc House,  
Cliff Road,  
Welton,  
Lincoln LN2 3JN

**Tel: 01673 861775**

**E: [healthlincapartments@elysiumhealthcare.co.uk](mailto:healthlincapartments@elysiumhealthcare.co.uk)**

